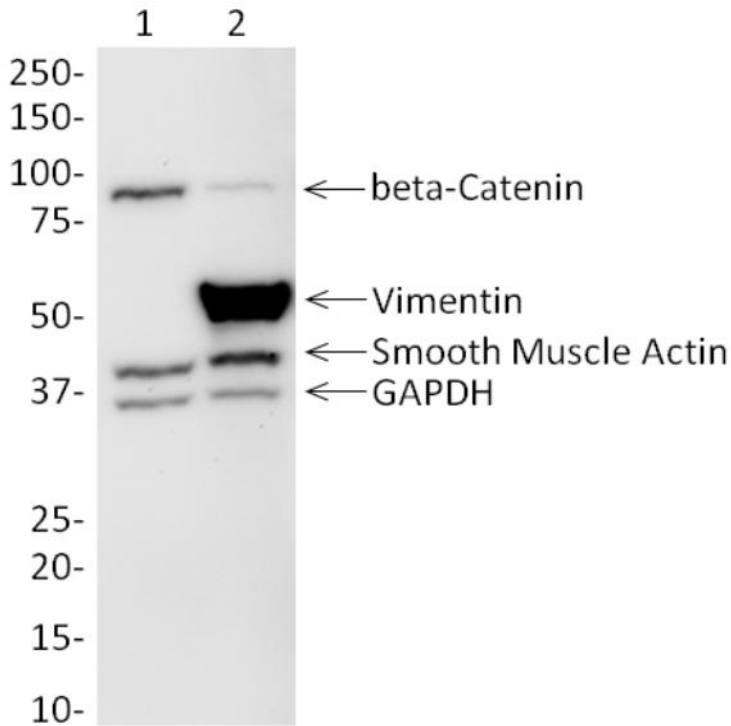


Western Transition



New Transfer and Post-baccalaureate students who are entering Western in Fall quarter are strongly encouraged to attend the Transitions program in July. Westerners in Transition (WIT) is a campus based program that provides support, encouragement and assistance to nontraditional and adult students at Western State Colorado University. To qualify for WIT assistance, students must be working towards their undergraduate degrees and. WESTERNERS IN TRANSITION (WIT) IS A CAMPUS BASED PROGRAM THAT PROVIDES SUPPORT, ENCOURAGEMENT AND ASSISTANCE TO. Western Transition on connectoswego.com *FREE* shipping on qualifying offers. We want you to love your time at Western Sydney University and succeed with your studies. Transition success is our way of helping you start that journey. The Academic Transition Opportunities (ATO) program is designed to assist Indigenous students in undergraduate programs at Western University. Western Edge Study Transition (WEST) is dedicated to improving the experience of international students studying in western institutions through providing. This Regional Economic Issues Special Report examines the major economic achievements attained by Western Balkan countries in the last. Western Technical College's Learner Support and Transition Services offers Developmental Studies Classes to help students get ready for the future. The Western Transition. Sibley, Eric. Journal of Pediatric Gastroenterology & Nutrition: January - Volume 52 - Issue 1 - p 2. doi: /MPG. The Transfer Transition Program is a half-day orientation for new transfer students starting in summer I, summer II or fall. The program is designed to make the. Western Grain Transition Payments Act. S.C. , c. 17, Sch. II. Assented to An Act to provide authority to make transition payments to owners of . The Bed Based Transition Care Program is a voluntary short-term program which offers people at the end of their hospital stay time to further recover and decide. The Transition Programs Office at TWU exists to help undergraduate students in their practical transition from first year student to graduate of TWU. By partnering . What is UT1? If you are also adjusting to a new place, a new culture, a new language, and new ways of learning, this first year is often very, very challenging.

[\[PDF\] Murder At Oklahoma](#)

[\[PDF\] A Forgotten Chapter Of Indian History As Described In The Memoirs Of Seth Naomul Hotchand Of Karachi](#)

[\[PDF\] Helter Skelter](#)

[\[PDF\] Heterostructure Lasers](#)

[\[PDF\] Sixth And Seventh Symphonies](#)

[\[PDF\] Encyclopedia Of Real Estate Appraising](#)

[\[PDF\] Websters New American Crossword Puzzle Dictionary](#)