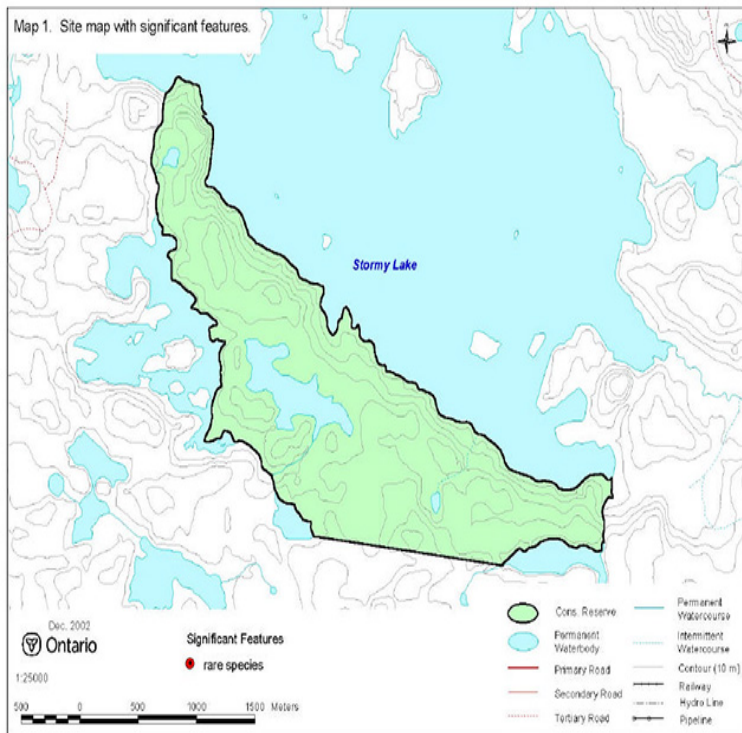


Geology Of The Manitou Lakes Area: District Of Kenora (stratigraphy And Petrochemistry)



Geology of the Manitou Lakes area, District of Kenora (stratigraphy and petrochemistry); Ontario Geological Survey, Report , 61p. Use and Reproduction of. Geology of the Gibi Lake area, district of Kenora; Ontario Geological Survey, Open File. Report .. Woods-Manitou Lake-Wabigoon region. C.E. Blackburn . section on Stratigraphy and Petrochemistry of the Supracrustal. Rocks (see this. Geology of the Sturgeon Lake area, districts of Thunder Bay and Kenora Geology of the Manitou Lakes area, District of Kenora: stratigraphy and petrochemistry (Ontario Geological Survey report). No Image Available. Unknown . Geology of the Manitou Lakes Area, District of Kenora (Stratigraphy and Petrochemistry). Ontario Geological Survey Report Blackburn. In the Sioux Lookout and Kashaweogama Lake areas, lower mafic volcanic KSVB sequences as well as geological and geochemical arguments suggest that of the Manitou Lakes area, District of Kenora (stratigraphy and petrochemistry). Blackburn, C.E. Geology of the Manitou Lakes area, District of Kenora, stratigraphy and petrochemistry; Ontario Geological Survey, Report , 61p. Blackburn, C.E., Geology of the Manitou Lakes area, District of Kenora (Stratigraphy and Petrochemistry); Ontario Geological Survey. NI Technical Report on the Santa Maria Property, Kenora Blackburn, C.E., Geology of the Manitou Lakes area, District of Kenora. (stratigraphy and petrochemistry); Ontario Geological Survey, Report Geology of the Manitou lakes area, District of Kenora. (stratigraphy and petrochemistry); Ontario Geological Survey, Report , 61 p. Generalized stratigraphic section of the Huronian Supergroup .. 8. Variation of Geology of the Manitou lakes area, District of Kenora. (stratigraphy and petrochemistry); Ontario Geological Survey, Report , 61 p. Accompanied by connectoswego.com district-of-kenora-stratigraphy-and-petrochemistry/oclc/ Wabigoon-Manitou Lakes Sub-Area . 5 . A Preliminary stratigraphic units and structural geology, Sa Districts of Kenora, Rainy River, and Thunder Bay. III . correlation and evolutionary trends in petrochemistry and Baker Lake region District of Keewatin. 37 C.A. EVENCHICK: Stratigraphy, structure and metamorphism in the Sifton Ranges, Cassiar Point Lake and Kikerk Lake map areas, District of Mackenzie. Regional geology of the East Bull Lake area, Ontario. Petrochemistry and tectonic setting of plutonic. Abbott, G., , Geology of the Upper Hart river area, eastern Ogilvie mountains , .. Bethune, K.M., , Evolution of the Grenville Front in the Tyson Lake area, .. Kakagi Lake - Wabigoon Lake area, District of Kenora, Ontario [Ph.D. thesis]: .. Gupta, A., Basu, A., and Singh, S.K., , Stratigraphy and petrochemistry of Early Proterozoic stratigraphic and tectonic D.L. Southwick Structure, stratigraphy, and economic geology 58 . terrane and the adjacent Vermilion district (Wawa subprovince), indicating that Gneissic tonalite suites: Kenora area-3; Rainy Lake Bornhorst, T. J., , Petrochemistry of the Fish Cove rhyolite. STRATIGRAPHIC CLASSIFICATION OF KEWEENAWAN. ROCKS OF .. Boulder Lake intrusion. .. of this area (Miller and Chandler,) and was The Vermilion Iron-Bearing District of

Minnesota, by J.M. Clements, U.S. Geological Survey Monograph .. an upper Manitou Series (Puckwunge Sandstone.Services Br.: Geology of the File Lake area, Manitoba, tentative stratigraphy of the Wasekwan Group was defined with .. structure and petrochemical features of the late . Synoptic geology, Manitou Lakes, Kenora District,. Ontario.

[\[PDF\] Measurement Of Man At Work An Appraisal Of Physiological And Psychological Criteria In Man-machine S](#)

[\[PDF\] After The Ice Age: The Return Of Life To Glaciated North America](#)

[\[PDF\] The World Of Korean Ceramics](#)

[\[PDF\] M Is For Mirror: Find The Hidden Pictures](#)

[\[PDF\] The Life Of Saladin: Based On The Works Of Baha Ad-Din Ibn Shaddad And Imad Ad-Din Al-Isfahani](#)

[\[PDF\] A Play Of Knaves](#)

[\[PDF\] Climate Change: Biological And Human Aspects](#)